

Resizing Images - Lightroom

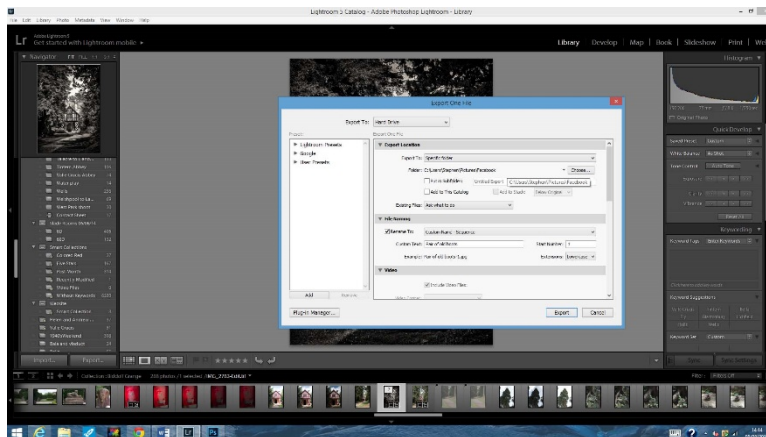
In order to submit a DPI for inclusion in any of the Society competitions it must first be resized with the tallest edge being no higher than 1050 pixels and the widest edge being no wider than 1400 pixels.

This guide has been written using Lightroom 5.6 and so some older versions may be different. If your version is different (or you use a different software package) then please look on the software's web page for more information.

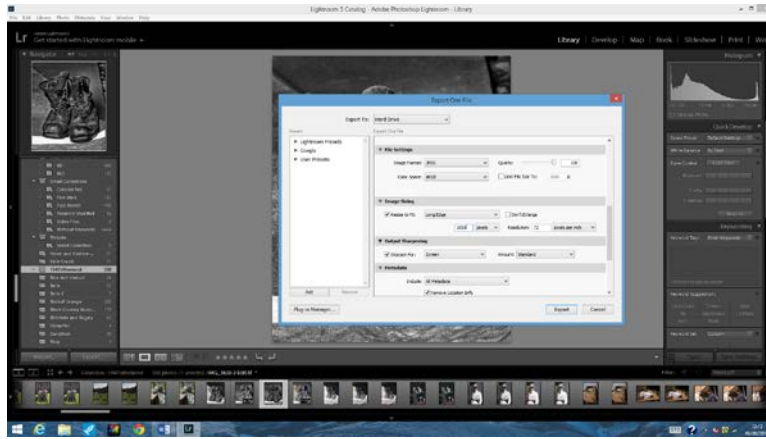
1. Begin by loading the image into Lightroom.
2. Make any necessary edits to the image then select File then click on Export.



3. This will bring up the box below. Under the Export Location tab choose the folder where the file will be saved to. Next, under the File Naming tab choose a name for the file. A number of naming options are available.



4. Next scroll down to reveal the File Settings and Image Sizing options.



Under File Settings choose the format you wish to save the image in. Under Image Sizing, click in the Resize to Fit box to check it. Next click on the box immediately to the right of this and choose Longest Edge from the dropdown list. This will bring up a box in which to type in the length of the longest edge of the image (1050 for portrait or 1400 for landscape) and a dropdown list to choose the unit of measurement (pixels needs to be set).

5. Finally click on Export to save the file.